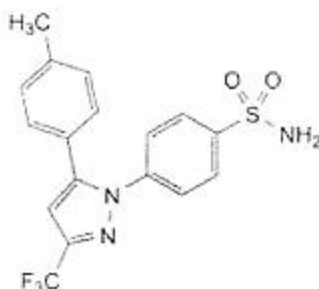




Molecular Structure



Molecular Formula $C_{17}H_{14}F_3N_3O_2S$
Molecular Weight 381.4
CAS Registry Number 169590-42-5

Nov 28 2022

Tests	Specifications	Results
Appearance	White or almost white crystalline or amorphous powder	White crystalline powder
Solubility	Practically insoluble in water, freely soluble in anhydrous ethanol, soluble in methylene chloride. It shows polymorphism	Conforms
Identification	IR	Positive
Melting point	160 ~ 164°C	161 ~ 162°C
Related substances	Impurity A ≤ 0.4% Impurity B ≤ 0.1% Impurity C ≤ 0.1% Impurity D ≤ 2.5 ppm Impurity E ≤ 2.5 ppm Impurity F ≤ 0.1% Sum of impurity D & E ≤ 2.5 ppm Max individual unknown impurity ≤ 0.1% Total impurities ≤ 0.5%	< 0.03% < 0.03% < 0.03% ND ND < 0.03% ND < 0.03%
Water	≤ 0.5%	0.0%
Sulfated ash	≤ 0.2%	0.0%
Residual solvents	Ethanol ≤ 5000 ppm Toluene ≤ 890 ppm Benzene ≤ 2 ppm	41 ppm 4 ppm ND
Assay	98.0 ~ 102.0%	99.5%

Packaging & storage	Preserve in tight containers, protected from light and moisture. Store at room temperature.
Conclusion	Material complies with EP10.0

