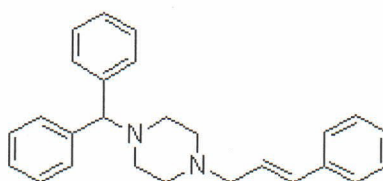


Batch no 241210-16
Mf date Dec 12 2024
Retest Dec 11 2026
Batch size 450 kg

Molecular Structure



Molecular Formula $C_{26}H_{28}N_2$
Molecular Weight 368.52
CAS Registry Number 298-57-7

May 09 2025

Tests	Specifications	Results
Appearance	White or off-white crystals or crystalline powder, odorless	Conforms
Identification	Meets the requirements	Positive
Solubility	Soluble in chloroform, soluble in boiling ethanol, almost insoluble in water	Conforms
Melting point	117 ~ 121°C	118.6 ~ 119.9°C
Absorption coefficient	558 ~ 592	585
Alkalinity	Red	Conforms
Chloride	≤ 0.1%	Conforms
Loss on drying	≤ 0.5%	0.1%
Residue on ignition	≤ 0.1%	0.05%
Heavy metals	≤ 20 ppm	Conforms
Microbial limits	Aerobic count	≤ 1000 cfu/gr
	Moulds and yeasts	≤ 100 cfu/gr
	E.Coli	: Negative
Assay (oab)	≥ 98.0% of $C_{26}H_{28}N_2$	99.2%

Packaging and storage	Preserve in tight containers and store in a dry place
Conclusion	Material complies with CP2015