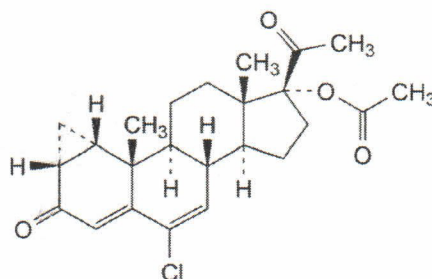


Batch no 6010-250404
Mf date May 16 2025
Retest May 15 2030

Molecular Structure



Molecular Formula $C_{24}H_{29}ClO_4$
Molecular Weight 416.9
CAS Registry Number 427-51-0

Jul 28 2025

Tests	Specifications	Results
Appearance	White or almost white crystalline powder	Conforms
Solubility	Practically insoluble in water, very soluble in methylene chloride, freely soluble in acetone, soluble in methanol, sparingly soluble in ethanol	Conforms
Identification	IR	Positive
Melting point	About 210°C	210 ~ 211°C
Specific optical rotation	+152 ~ +157°	+155°
Loss on drying	≤ 0.5%	0.1%
Related substances	Impurity E ≤ 0.2% Impurity G ≤ 0.15% Impurity F ≤ 0.4% Impurity B ≤ 0.15% Impurity C ≤ 0.15% Unspecified impurity ≤ 0.1% Total impurities ≤ 0.5%	ND ND 0.03% ND ND 0.06% 0.15%
Residual solvents	Chloroform ≤ 60 ppm Methanol ≤ 3000 ppm Ethyl acetate ≤ 5000 ppm Methylene chloride ≤ 600 ppm	< 28 ppm ND < 5 ppm ND
Sulfated ash	≤ 0.1%	0.07%
Assay (odb)	97.0 ~ 103.0%	100.6%

Packaging & storage	Protected from light
Conclusion	Material complies with EP11