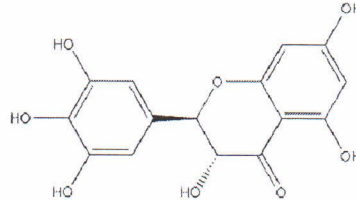




Batch no TKD-20221130
Mf date Nov 30 2022
Retest Nov 29 2024
Batch size 200 kg

Molecular Structure



Molecular Formula $C_{15}H_{12}O_8$
Molecular Weight 320.25
CAS Registry Number 27200-12-0
Botanical name *Ampelopsis megalophylla* Diels et Gilg

Feb 07 2023

<u>Tests</u>	<u>Specifications</u>	<u>Results</u>
Appearance	Almost white powder	Conforms
Odor	Characteristic	Conforms
Loss on drying	≤ 5.0%	2.67%
Residue on ignition	≤ 5.0%	2.56%
Heavy metals	< 20 ppm	Conforms
Arsenic (As)	< 0.5 ppm	Conforms
Lead (Pb)	< 0.5 ppm	Conforms
Cadmium (Cd)	< 0.05 ppm	Conforms
Mercury (Hg)	ND	ND
Pesticide residue (GC)	Acephate < 0.1 ppm	Conforms
	Methamidophos < 0.1 ppm	Conforms
	Parathion < 0.1 ppm	Conforms
	PCNB < 10 ppb	Conforms
Microbiological tests	Total plate count < 1000 cfu/g	Conforms
	Yeast & mold < 100 cfu/g	Conforms
	E.coli Negative	Conforms
	Salmonella Negative	Conforms
Particle size	100% pass 80 mesh	Conforms
Assay (HPLC)	≥ 98.0%	98.22%

Packaging & storage	Store in cool & dry place, keep away from strong light and heat
Conclusion	Material complies with in house standard

