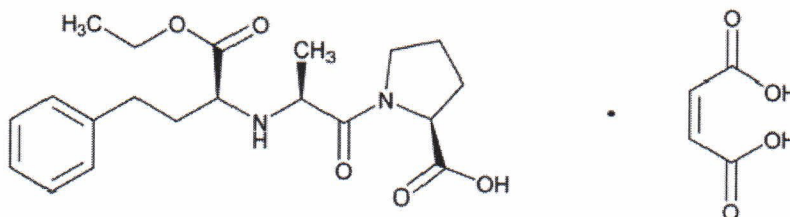


Batch no 5112-23-075  
Mf date Jun 02 2023  
Retest Jun 01 2028

Molecular Structure



Molecular Formula  $C_{20}H_{28}N_2O_5 \cdot C_4H_4O_4$

Molecular Weight 492.52

CAS Registry Number 76095-16-4

Mar 06 2024

Tests	Specifications	Results
Appearance	White or almost white crystalline powder	Almost white crystalline powder
Solubility	Freely soluble in methanol, sparingly soluble in water, practically insoluble in dichloromethane	Conforms
Identification	IR, RRT	Positive
Specific rotation	$-41.0 \sim -43.5^\circ$	$-42.4^\circ$
Loss on drying	$\leq 1.0\%$	$< 0.1\%$
Residue on ignition	$\leq 0.2\%$	$< 0.1\%$
Related substances	Enalaprilat	0.08%
	Moexipril related compound F	$\leq 0.3\%$
	Enalapril related compound D	$\leq 0.3\%$
	Enalapril cyclohexyl analog	$\leq 0.3\%$
	Any unspecified impurity	$\leq 0.1\%$
	Total impurities	$\leq 2.0\%$
Residual solvents (GC)	Ethanol	$\leq 5000$ ppm
Assay (odb) HPLC		98.0 ~ 102.0%

Packaging & storage	Preserve in well-closed containers, and store at controlled room temperature
Conclusion	Material complies with USP