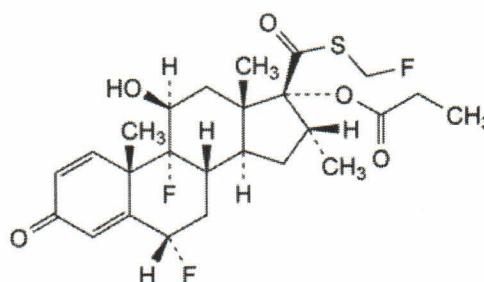


Molecular Structure



Molecular Formula	C ₂₅ H ₃₁ F ₃ O ₅ S
Molecular Weight	500.6
CAS Registry Number	80474-14-2

Jul 03 2025

<u>Tests</u>	<u>Specifications</u>	<u>Results</u>
Appearance	White or almost white powder	Confirms
Solubility	Practically insoluble in water, sparingly soluble in methylene, chloride, slightly soluble in ethanol.	Conforms
Identification	IR, HPLC	Positive
Specific optical rotation	+32 ~ +36°	+33.6°
Acetone	≤ 1.0%	0.07%
Water	≤ 0.5%	0.12%
Related substances	Impurity C ≤ 0.2%	0.09%
	Impurity D ≤ 0.3%	0.11%
	Impurity G ≤ 0.3%	< 0.05%
	Unspecified impurities ≤ 0.1%	0.05%
	Total impurities ≤ 0.8%	0.30%
Assay (HPLC) odb	97.0 ~ 102.0% of C ₂₅ H ₃₁ F ₃ O ₅ S	99.5%

Packaging and storage	Preserve in tight containers, and store in a dry place
Conclusion	Material complies with EP9