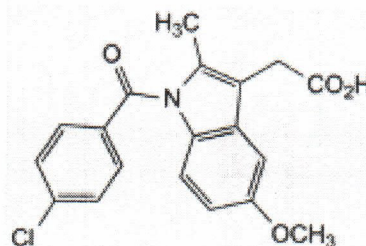


Batch no 20250206
Mf date Feb 04 2025
Exp date Feb 03 2028

Molecular Structure



Molecular Formula $C_{19}H_{16}ClNO_4$
Molecular Weight 357.8
CAS Registry Number 53-86-1

Mar 10 2025

Tests	Specifications	Results
Appearance	White or yellow crystalline powder	White crystalline powder
Solubility	Practically insoluble in water, sparingly soluble in ethanol (96%)	Conforms
Identification	IR	Positive
Melting point	158 ~ 162°C	160 ~ 161°C
Related substances	Unspecified impurities ≤ 0.1% Reporting threshold ≤ 0.05% Total impurities ≤ 0.3%	0.05% Conforms 0.18%
Loss on drying	≤ 0.5%	0.06%
Sulfated ash	≤ 0.1%	0.07%
Microbial limits	Aerobic bacteria ≤ 1000 cfu/gr Yeast & molds ≤ 100 cfu/gr Escherichia coli Negative	< 10 cfu/gr < 10 cfu/gr ND
Particle size	100 mesh	Conforms
Assay (odb)	98.0 ~ 102.0% of $C_{28}H_{28}O_3$	100.0%

Packaging and storage	Protected from light
Conclusion	Material complies with EP10. 4