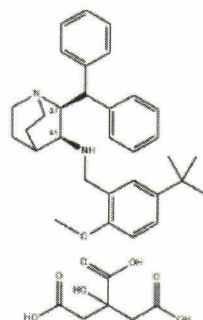


Batch no 20250901
 Mf date Sep 23 2025
 Retest Sep 22 2030

Molecular Structure



Molecular Formula $C_{38}H_{48}N_2O_8$
 Molecular Weight 660.81
 CAS Registry Number 359875-09-5

May 13 2026

<u>Tests</u>	<u>Specifications</u>	<u>Results</u>
Appearance	A white to off-white crystalline powder	A white crystalline powder
Solubility	Soluble in DMF, MeOH	Conforms
Identification	IR, HPLC	Positive
Single max impurity	≤ 0.5%	0.07%
Total impurities	≤ 1.0%	0.1%
Chiral purity (EE value)	≥ 99.0%	100.0%
Heavy metals	≤ 10 ppm	1.7 ppm
Residue on ignition	≤ 0.1%	0.07%
Residual solvents	DCM ≤ 600 ppm Ethyl acetate ≤ 5000 ppm Ethanol ≤ 5000 ppm Methanol ≤ 3000 ppm Toluene ≤ 890 ppm n-Heptane ≤ 5000 ppm Iso-Propanol ≤ 5000 ppm Acetone ≤ 5000 ppm MTBE ≤ 5000 ppm	ND ND ND ND ND ND ND 656 ppm 514 ppm
Water content (by KF)	1.5 ~ 4.5%	3.0%
Microbial count	Total aerobic ≤ 1000 cfu/g Mold & yeast ≤ 100 cfu/g Enterobacterias Not presence in 1 gr	Conforms Conforms Conforms
Purity (HPLC)	≥ 99.0%	99.9%
Assay (oab)	97.0 ~ 103.0%	100.1%
Packaging & storage	Preserve in well-closed containers, protected from light, store at ambient temperature	
Conclusion	Material complies with in-house standard	