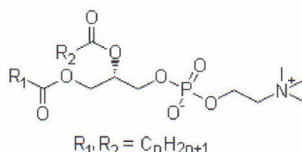




Batch no 202306021  
Mf date Jun 26 2023  
Exp date Jun 25 2025

### Molecular Structure



Molecular Formula  $C_{42}H_{80}NO_8P$   
Molecular Weight 758.06  
CAS Registry Number 8002-43-5

Aug 29 2023

Tests	Specifications	Results
Appearance	Yellow to brown semi-solid or lump	Yellow semi-solid
Identification	Meets the requirements	Positive
Acid value	$\leq 30$ mg KOH/g	1 mg KOH/g
Iodine value	$\geq 75$ gI/100g	105 gI/100g
Peroxide value	$\leq 3$	0
Solution color	Abs $\leq 0.8$ in 350 nm	0.1
Acetone-insoluble matter	$\geq 90.0\%$	90.7%
Hexane-insoluble matter	$\leq 0.3\%$	0.3%
Water	$\leq 1.5\%$	0.7%
Protein	Meets the requirements	Conforms
Heavy metals	$\leq 0.0005\%$	$\leq 0.0005\%$
Arsenic	$\leq 0.0002\%$	$\leq 0.0002\%$
Lead	$\leq 0.0002\%$	$\leq 0.0002\%$
Residual solvents	Ethanol $\leq 0.2\%$ Acetone $\leq 0.2\%$ , Ether $\leq 0.2\%$ Petroleum ether $\leq 0.05\%$ , Hexane $\leq 0.02\%$ Total residual solvents $\leq 0.5\%$	0.1% ND ND 0.1%
Related substances	Lysophosphatidyl ethanolamine (LPE) $\leq 1.0\%$ Lysophosphatidyl choline (LPC) $\leq 3.5\%$ LPE + LPC $\leq 4.0\%$ Inositol phospholipid (PI) $\leq 5.0\%$ LPE + LPC + PI $\leq 8.0\%$	ND ND ND ND ND
Microbial limit	Total aerobic bacteria count $\leq 50$ CFU/g Mold & yeast count $\leq 50$ CFU/g E. coli ND	$< 10$ CFU/g $< 10$ CFU/g ND
Bacterial endotoxin	$< 2.0$ EU/g	$< 2.0$ EU/g
Phosphorus	$\geq 2.7\%$	3.6%
Nitrogen	1.5 ~ 2.0%	1.6%
Phosphatidyl choline (PC)	$\geq 45.0\%$	94.2%
Phosphatidyl ethanolamine (PE)	$\leq 30\%$	ND
PC + PE	$\geq 70\%$	94.2%

Long term storage	Away from direct sunlight. Store at $-18^\circ\text{C}$
Conclusion	Material complies with CP2020

