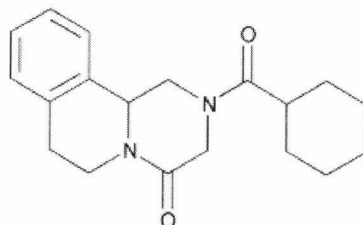


Batch no JYP-240101
Mf date Jan 03 2024
Exp date Dec 2027

Molecular Structure



Molecular Formula $C_{19}H_{24}N_2O_2$
Molecular Weight 312.41
CAS Registry Number 55268-74-1

Feb 05 2024

<u>Tests</u>	<u>Specifications</u>	<u>Results</u>
Appearance	A white or almost white crystalline powder	White powder
Solubility	Freely soluble in alcohol and in chloroform; very slightly soluble in water	Conforms
Identification	IR	Positive
Melting range	136 ~ 142°C	136 ~ 138°C
Loss on drying	≤ 0.5%	0.13%
Residue on ignition	≤ 0.1%	0.01%
Phosphate	≤ 0.05%	< 0.05%
Related compounds	A ≤ 0.2%	0.04%
	B ≤ 0.2%	0.06%
	C ≤ 0.2%	0.002%
Residual solvents	Dichloromethane ≤ 600 ppm	Conforms
	Ethanol ≤ 5000 ppm	Conforms
Assay (odb)	98.5 ~ 101.0% of $C_{19}H_{24}N_2O_2$	100.1%

Packaging & storage	Preserve in well-closed, light-resistant containers
Conclusion	Material complies with USP44